

Marwa 2010
eLibrary Software

Getting Started Guide



Making Life Easy

Web Site: <http://www.ltfsoft.org>
Email: contact@ltfsoft.org

Getting started

Welcome to LTF Marwa 2010! We hope you enjoy learning and using this revolutionary software. Marwa 2010 is designed to accommodate various ways of working. In this short tutorial, you can learn how to use the features of Marwa 2010 to index and manage your digital store supports.

Installation

Before beginning the exercises, install the software and start it as demo version.

Pre-requires

To install the software, Marwa 2010 needs the following runtimes

- Framework 3.5: you can download it from our web site:
<http://www.ltfsoft.org/ltfproducts/dotnetfx35.exe>
- MySQL server : you can download it from our web site from this location:
<http://www.ltfsoft.org/ltfproducts/ltfInitServer.zip>
This server file can be automatically downloaded when you start Marwa 2010 for the first time.

1. What is Marwa 2010:

Marwa 2010 (before called ItfMakata) is a powerful software for indexing your storage supports like CDROM, DVDROM, external hard disk, flash disk ...etc, and make searching files very easy.

2. Why I need Marwa 2010?:

Imagine that you have many DVDs and many CDROM, and you have a lot of programs and tools and video and songs stocked in those supports, if you need a program or an mp3 songs, how you can know where your file is stored, maybe you will put the 10 DVDs in the driver to find it on last one, but when you use Marwa you need only to type the name of file you need, and Marwa will give you the right support where your file is stored and the path in the support.

3. How I can index and reference a new disk with Marwa?

To add a new disk (DVd or CDROM or Disk...etc) follow steps below:

- Click on button **New Media**

This screen will appear

Creating New Media

Driver info

Driver:

Used Space:

Free Space:

Internal Name:

Serial Number:

Image

>>> Select Picture

Categories

Category:

Categories Nber:

Media Nber:

Media Information

Code:

Name:

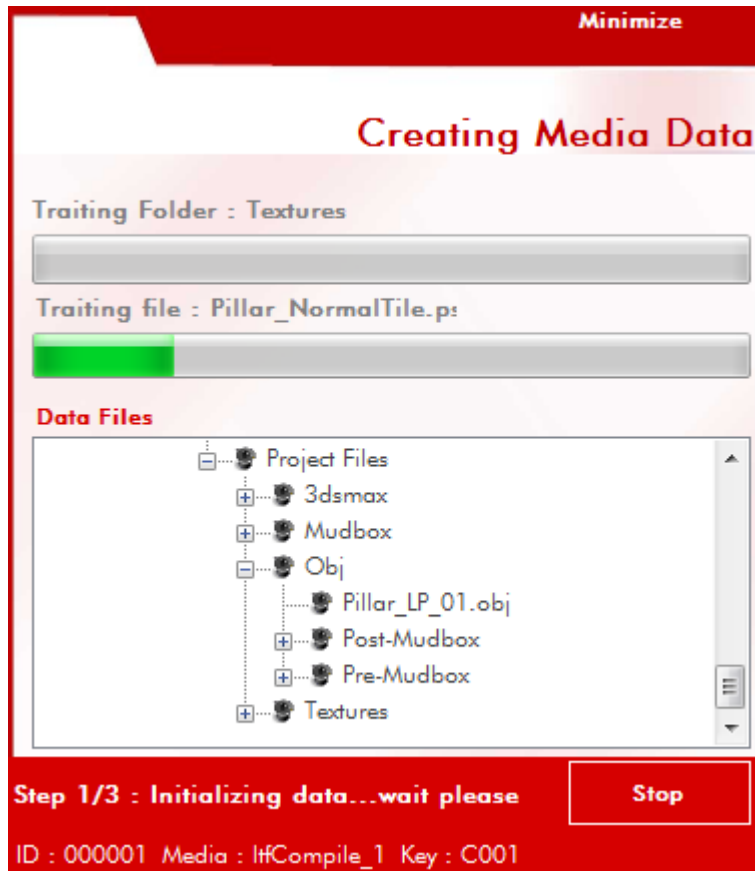
Capacity:

* In Mo example 700

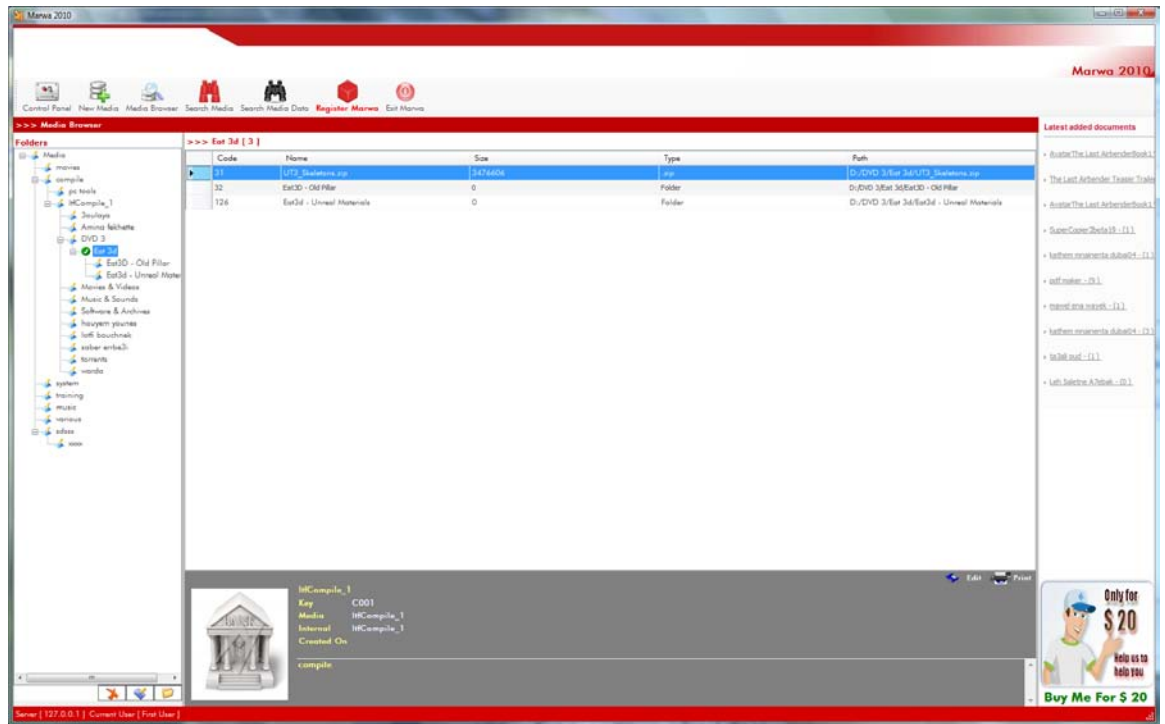
Observations

Here you write a description for your support

- From list Drivers, select the driver you want to index
- Marwa collect the support information like the used and free space, the serial number and other information.
- In zone Categories, choose the category where your new support will be added.
Note: For example for the movies, you can add arrange your movies by gender, so you create a category for each gender (action, romantic, horror...etc)
- In the zone **Media information**, choose a name for your support;
Note: the default value is the internal support name.
- Click on button **Save**
- Now, Marwa will start to index and reference your support, so this screen will appear:



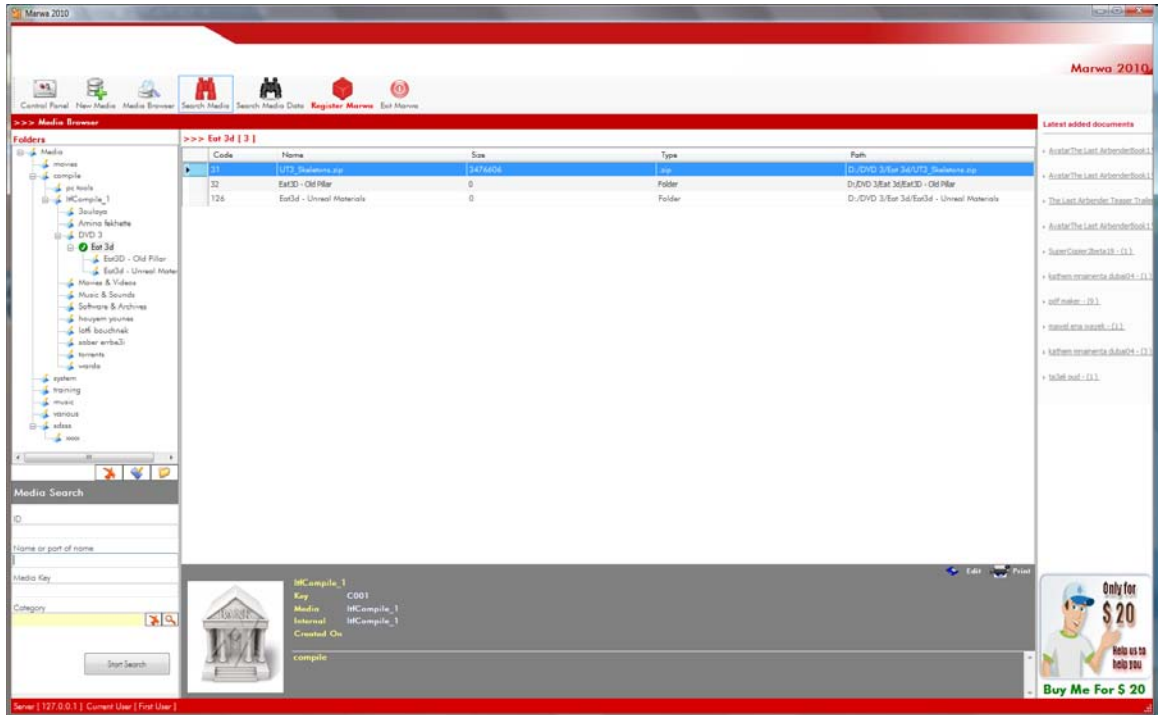
- Marwa will return automatically to the main screen when indexing and referencing finish.
- Get of your support from the computer.
- Refresh the category where your support is added and you can navigate on it easily. For this example I should see this screen:



4. How I can search a support?

To search for a disk follow steps below:

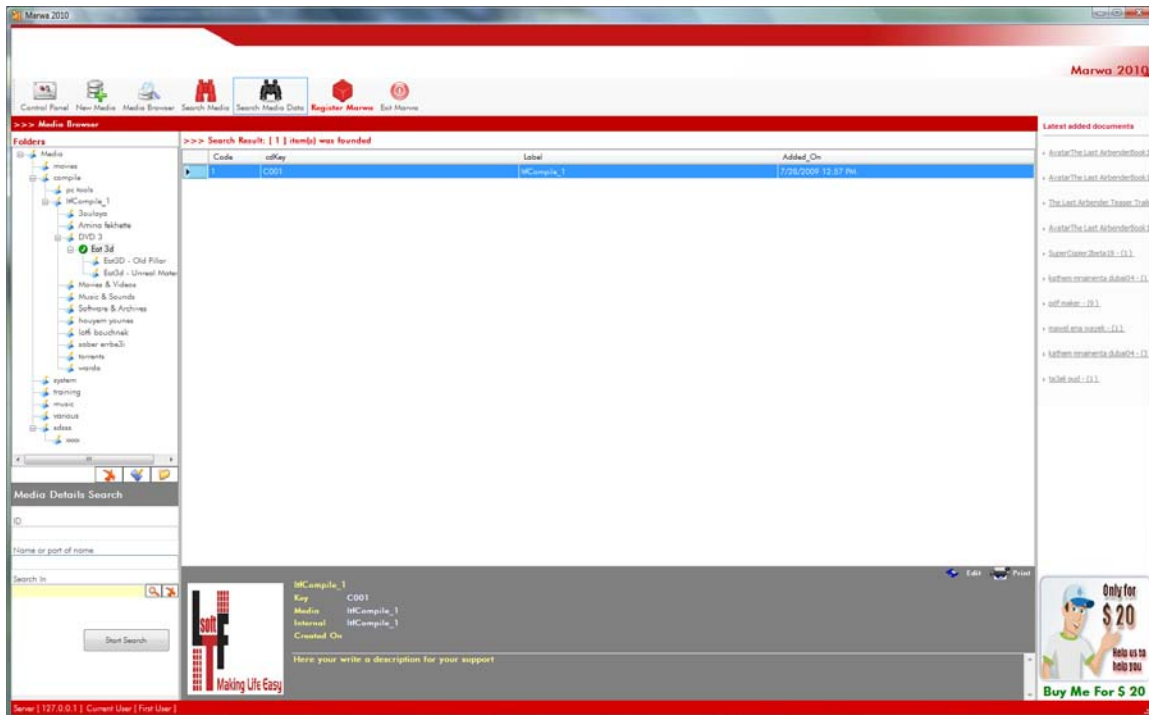
- On toolbar , click on **Search Media** button
- On the left of main screen, this control will appear:



- Write the name of support you are looking for.
- Click on button **Start Search**.

5. How I can search for file?

- On toolbar , click on **Search Media Data** button
- On the left of main screen, this control will appear:



- Write the name or part of name of file you are looking for.
- Click on button **Start Search**.

6. How I can edit the name and picture associated of a disk?

To change the information of disk:

- Select your disk.
- Click on link **Edit**, on the right-bottom of the list
- This screen will appear:

The image shows a 'Properties' dialog box with a red header. The 'General' tab is selected. The fields are as follows:

ID	001
Key	C001
Internal Name	lhfCompile_1
Out Name	lhfCompile_1
Free Space	0.000 OCT
Type	compile
Description	Here your write a description for your support

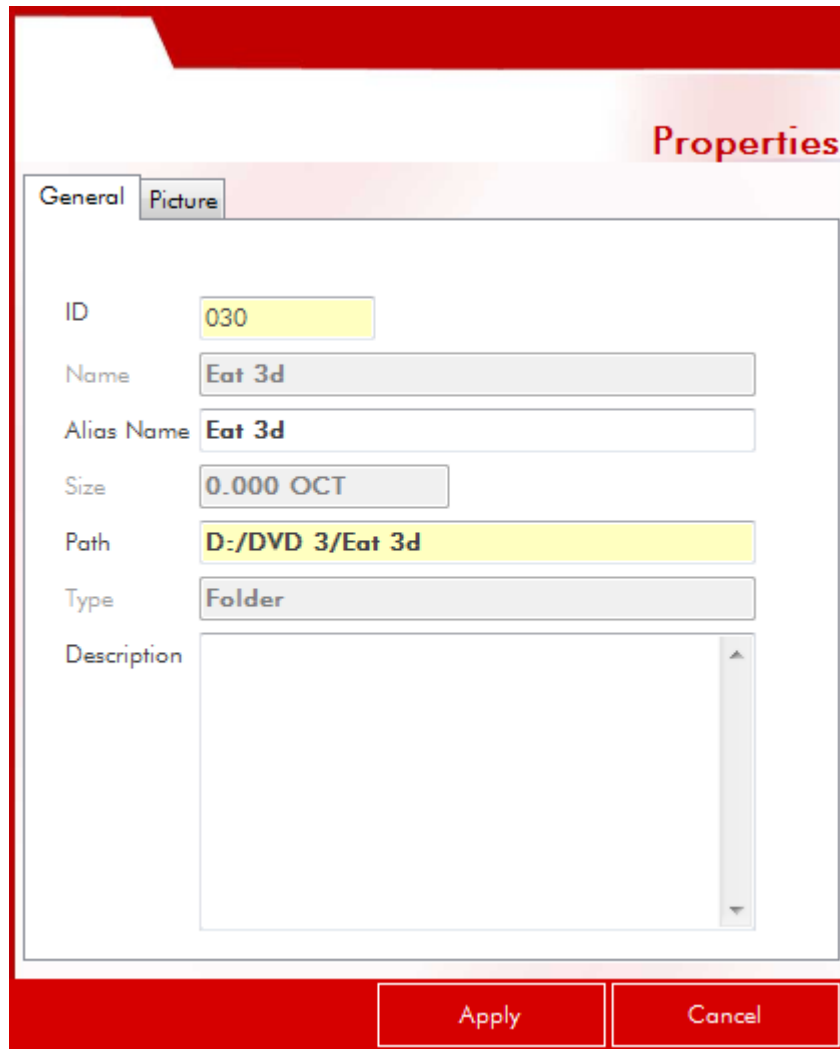
At the bottom of the dialog are two buttons: 'Apply' and 'Cancel'.

- Make the change and then click on button **Apply**.

7. How I can change file information?

To change file information

- Select the file you want to change
- Click on the edit link on the right-bottom of list
- This screen will appear:



- Make the change and then click on button **Apply**.

NOTICE VERY IMPORTANT TO RUN Marwa 2010 UNDER WINDOWS VISTA:

1. IF YOU USE WINDOWS VISTA (ANY VISTA VERSION), YOU SHOULD GIVE ADMINISTRATOR RIGHTS TO MARWA 2010, BECAUSE THE SECURITY SYSTEM BLOCKS MARWA 2010 TO CONNECT TO INTERNET.

How I can run Marwa 2010 under windows Vista:

To run windows under windows vista follow steps below:

- Look for file **Marwa.exe** (you should find it in folder C:\Program Files\LTF\LtfMarwa\Marwa.exe).
- Right click on this file, and choose **Properties**.
- Choose tab **Compatibility**.
- Check **Run as Administrator**.

Important Advice:

LTF offers for free all new updates of Marwa 2010. So it's very important that you check always for new update or activate automatic connection.

Again, we hope you enjoy learning and using this revolutionary software. We work hard to offer you a comprehensive and scalable solution to help you do your job quickly. This solution has the principle of being technically and economically accessible to all.



Making Life Easy

Web Site: <http://www.ltfsoft.org>
Email: contact@ltfsoft.org